

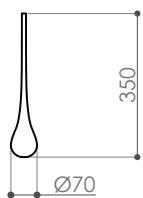
melogranoblu

HYDRA SIGMA glass

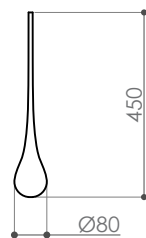
design E. Rocchi & M. Crema - 2008

DESCRIZIONE	Hydra system hand blown glass pendant
Environment:	Indoor
Mounting:	Suspension with metallic mesh cord or with steel cable
Body:	Frosted or transparent hand blown glass
Weight:	90 g (01), 150 g (02), 250 g (03), 380 g (04)

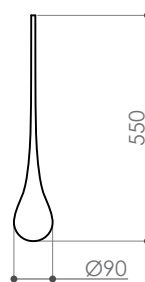
dimensions in mm



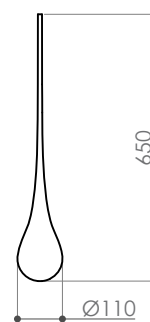
Sigma 01



Sigma 02



Sigma 03



Sigma 04



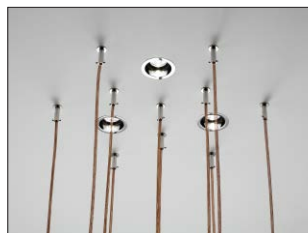
melogranoblu

LIGHT SOURCE USABLE

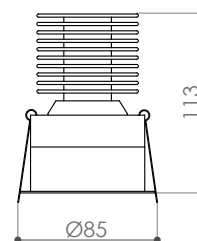
IP20   CE **LED**

↳ *INDIRECT LIGHT_ outer glass source*

↳ RECESSED (only with false ceiling)

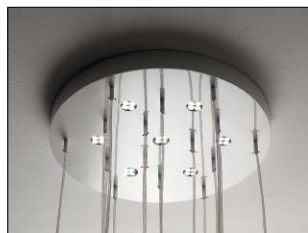


Recessed LED spotlight 10W, 24Vdc, 2700 K cri93 optic 6° circular body ø 85 mm.

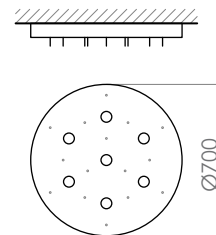


↳ CEILING

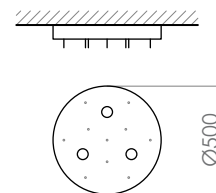
↳ standard dimensions:



Round ceiling LED Ø 70 cm varnished or nikel plate 7 x 10W LED dimmable, 2700 K optic 10°. 15 fixing supports for metallic mesh cords.



Round ceiling LED Ø 50 cm varnished or nikel plate 3 x 10W LED dimmable, 2700 K optic 10°. 10 fixing supports for metallic mesh cords.

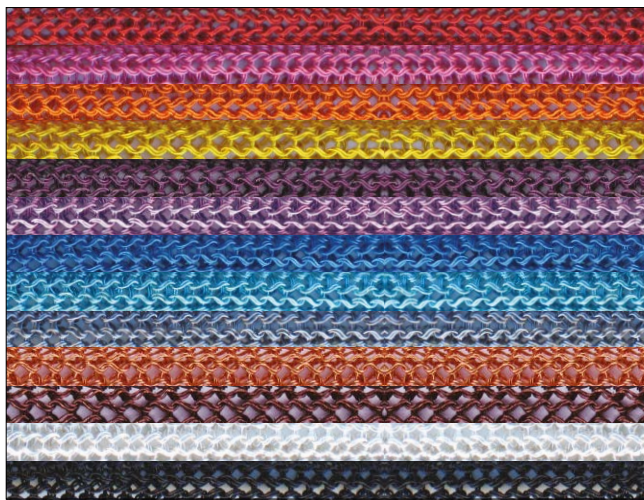


↳ custom: melogranoblu can design and product custom ceilings

melogranoblu

HANGING SYSTEMS

→ METALLIC MESH CORD Ø 8mm



#T11 Red
#T34 Fuxia
#T39 Orange
#T26 Gold
#T36 Purple
#T35 Wistaria
#T12 China Blue
#T29 Turquoise
#T08 Titanium
#T00 Copper
#T20 Brown
#T07 Silver
#T21 Black

→ STEEL CABLE Ø 0,6 mm

The steel cable hanging system does not allow to use the inner glass light source.

